

2011

First German United Methodist Church
Christuskirche
Pastor Hans-Martin Steckel
556 W Glenoaks Blvd.
Glendale, CA 91202



SPECIAL OFFERINGS 2011

Each year we have a list of special offerings.

This document will inform about the projects we are going to sponsor

TABLE OF CONTENTS

Special disasters	2
Great hour of sharing	3
Easter offering.....	4
Native American Ministries.....	5
Los Angeles Food Collaborative	6
UM camp ministries	7
German "Erntedank" offering	8
L.A.'s Blind Childrens Center	9

SPECIAL DISASTERS

Tsunami in the Indian Ocean

Tornados in the Midwestern United States

Earthquake in Haiti or Chile

Earthquake and Tsunami in Japan

The United Methodist Church has the **United Methodist Committee on Relief**, an humanitarian agency which helps not only in special disasters. But UMCOR has all the systems set up in order to help. Its policy is sustainable help, meaning: When the media attention vanishes, UMCOR will stay.

<http://new.gbgm-umc.org/umcor/>



GREAT HOUR OF SHARING

APRIL 03, 2011

The United Methodist Church (UMC) in the USA, in parts together with the Presbyterian Church has six special Sundays during the course of a year:

Human Relations Day
One Great hour of Sharing
Native American Ministries Sunday
Peace with Justice Sunday
World Communion Sunday
United Methodist Student Day.



The 'larger' church understands these offerings as a part of our regular contribution to the world wide ministry we do altogether, thus the amounts are deducted from the income before our apportionments are being calculated.

We participate in two of them; one is One Great Hour of Sharing.

Gifts to One Great Hour of Sharing lay the foundation of all of UMCOR's work (see above) by covering the costs of doing business (trucks, storage, administration, control and other). This means all gifts designated to specific programs can go 100% to those programs because UMCOR's basic expenses are covered.



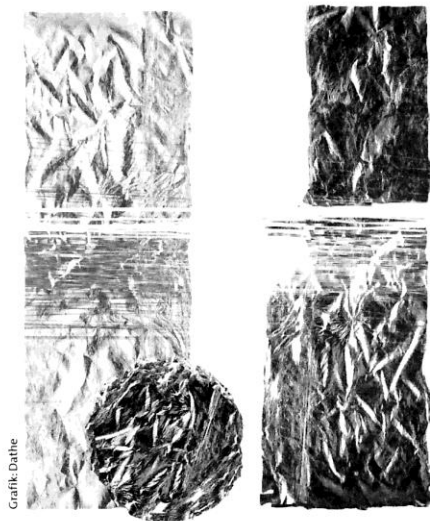
APRIL 24, 2011

Two of our special offerings are sponsoring the ministries we are doing as Christuskirche by ourselves, Easter and Erntedank (German Harvest Feast).

They shall be a special expression of the gratitude we have towards our Lord and savior.

At 'Easter', we remember God liberating the Jews from (Egyptian) slavery. Jesus sacrificed Himself as the perfect lamb for the forgiveness of our sins. His resurrection symbolizes and assures us of the liberation we have in our connection to God, our maker and redeemer.

Er lebt!



Grafik: Dathie

Früh, vor Sonnenaufgang gehen
Frauen aus der Jüngerschar
traurig, um nach dem zu sehen,
der ihr Herr und Meister war.
Was ist das? Der Stein ist weg!
Leer ist das Grab! Tief sitzt der Schreck
über jenes Engelwort:
Jesus lebt! Er ist schon fort!
Niemand hätte das gedacht:
Jesus ist vom Tod erwacht,
hat am Kreuz den Sieg vollbracht!
Die ganze Welt erbebt:
Er lebt!
Frühling wird es bei uns wieder,
Blumen streben an das Licht.
Und schon singt man Osterlieder,
Leben lebt, der Tod siegt nicht.
Was ist das? Wo kommt das her?
Jesus lebt! Er ist der Herr
über Menschen und Natur.
Seine Kraft ist Leben pur!

Reinhard Ellsel

M A Y 08, 2011

This is the other Special Sunday of the six UM special Sundays we observe.

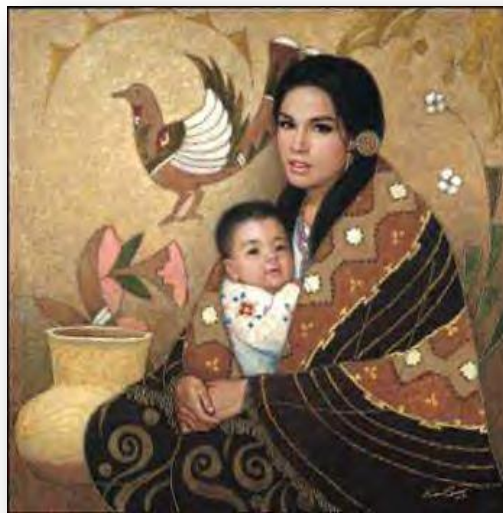
We know that there are hesitations because some tribes became rich with their gambling facilities.

But:

a) Indians only benefit if they keep within their tribes: If they intermarry or if their grandparents moved into the city, they are as lost as all the Indians used to be before the casinos came up.

b) Indians are not necessarily Christians: The casinos do not help to foster Christian faith within the Native American community.

This nationwide offering helps to start churches for Native Americans and support theological education to Indians who dedicate themselves to minister to their people. This Sunday has a very specific, missionary cause.



LOS ANGELES FOOD COLLABORATIVE

JUNE 19, 2011

About 50% of the churches in our district have some sort of food distribution ministry.

The grants from state and federal sources dwindled by 80% during the last 5 years. –

Who is going to feed the hungry now?

These churches came together in order to better access sources for their pantries. They learn how to write grants, how to give proper account of the monies received and how to make sure that the food will be distributed to the needy and not to the ‘users’.

The district has its own fund to help those food pantries which ‘fell through the cracks’ because they do not have people who are skilled enough to write good grant applications or who are facing unexpected demand (just some examples). But this fund has to get its monies from somewhere...

We adopted one Food Pantry: We collect food for **Imani Undidos** UM church in Inglewood. On top of this we have one special offering.

John Wesley's guidelines for Christian service remind us to "...do all the good you can, in all the places you can, to all the people you can!"

HERE ARE JUST THREE EXAMPLES OF CHRISTIAN SERVICE:

ROSEWOOD HISPANIC MINISTRY
Food is distributed under the big tree in front of the church. Neighbors gather and have fellowship during this time. Vouchers are distributed to needy families through the local elementary school. More than 50 families per month are served by this ministry at Rosewood UMC.



STOREHOUSE
The Storehouse at Holman UMC has been in existence since 1976. Volunteers gather three times per week to assemble food bags for needy families who have been referred through the LA Into Line. Most of the food comes from the Santa Monica Food Bank. Some fresh fruits and vegetables come from church members' gardens.



OPEN
IMANI UNIDOS FOOD PANTRY
OPEN 10 AM - 1 PM
TUE WED THUR
(323) 754-3320
PRAY FOR PEACE

IMANI UNIDOS AIDS PROJECT
Imani in Ki-Swahili means Faith. Unidos in Spanish means United. The Imani Unidos AIDS Project is an outreach project of Faith United Methodist Church whose mission is to distribute food and personal care items to needy persons in South Central Los Angeles who are living with HIV/AIDS. The pantry has been in existence for 15 years and relies on community volunteers who assemble and distribute the food to qualified recipients.



Won't you become an active participant in helping the Los Angeles District Food Connection Collaborative serve "the least of these" in our urban communities?

HOW CAN I HELP?

- 
 - Adopt a food pantry as one of your mission projects.
 - Conduct periodic non-perishable food drives and deliver the food collected to the food pantry of your choice.
- 
 - Volunteer to assist a food pantry by picking up the food from the Los Angeles Regional Food Bank, stocking the shelves, bagging the groceries for distribution or assisting with the distribution process.
- 
 - Send a check to the Los Angeles District for distribution to a food pantry of your choice.



UM CAMP MINISTRIES

OCTOBER 30, 2011

Where do young Methodists (usually) find Christ? During retreats in one of the 8 camps our conference has.

Our camp in Hemet is being remodeled, and now even 'established youngsters' would feel comfortable there. Sturtevant camp (Arcadia) luckily survived the station fire, Camp Colby (behind Strawberry Peak) only lost its pool and two cabins.

A 49% reduction in apportionment support, loss of a long term school contract, the Station Wildfire damage to Colby Ranch and the ongoing recession have produced a perfect fiscal storm for Cal Pac Camps. Already having reduced the number of Site director/managers from seven to six, additional staff cuts are pending which will deeply impact new and existing program development, leadership training, United Methodist discounts and marketing of our camp and retreat ministry.

Your prayers and pledges are needed to carry camp and retreat ministry through these troubled seas. Together we can calm the fiscal storm and chart a steady sustained course for building the Kingdom of God.



GERMAN "ERNTEDANK" OFFERING

OCTOBER 2, 2011

Two of our special offerings are sponsoring the ministries we are doing as Christuskirche by ourselves, Easter and Erntedank (German Harvest Feast).

They shall be a special expression of the gratitude we have towards our Lord and savior.

The German Harvest Feast has another tradition than the American Thanksgiving, although it is similar. In Germany, it always used to be a celebration in the fall, after the farmers had brought in their harvest. They gave God thanks by sacrificing their "first fruits" to the Lord.

We do not want to break with this custom although our fruits come from Ralphs and TJs and our prosperity does not show in full barns but in currency as a means of exchange.



L.A.'S BLIND CHILDRENS CENTER

DECEMBER 24, 2011

We want to help “L.A.'s Blind Childrens Center“ with our Christmas offering.

The Blind Childrens Center was founded in 1938, by members of the Southern California Delta Gamma Fraternity, to serve children from birth to school-age who are blind or severely visually impaired. The Center's mission is to provide comprehensive early intervention, specialized education and training, in a fully inclusive family oriented environment.



Blind Childrens Center

4120 Marathon Street, Los Angeles, California 90029 (323) 664-2153

The Center serves more than 100 children and their families each year. Center and home based services are free of charge and are provided in a culturally sensitive environment. It is a non-profit organization and relies completely on private contributions.